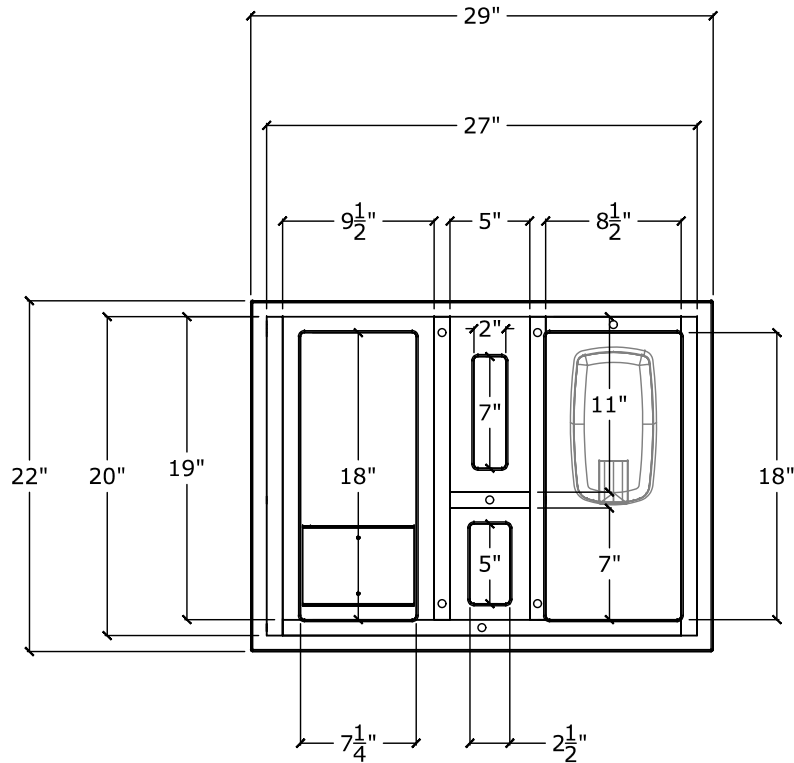


**Orders submitted with ANY changes to your approved drawing will not be processed.  
Please contact your inside sales representative for an updated drawing before submitting your purchase order.**

NOTE: WALL-MOUNTED UNIT MUST BE PROFESSIONALLY INSTALLED (FOR INSTRUCTIONS PLEASE VISIT [HTTP://IOFLIVE.COM/INSTRUCTIONS.HTML](http://ioflive.com/instructions.html))



OPENING FOR WIPE HOLER: 7.25"W x 18"H  
 COMPARTMENT FOR TISSUE BOX: 5"W x 11"H x 3.25"D  
 COMPARTMENT FOR MASKS: 5"W x 7"H x 3.25"D  
 OPENING FOR SANITIZER DISPENSER: 8.5"W x 18"H

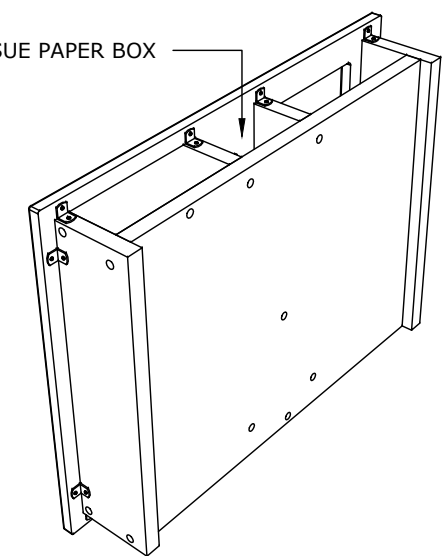
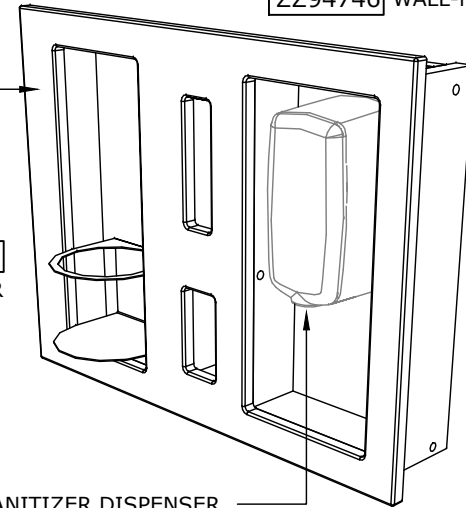
THERMOFOIL FRONT

ZZ94690  
METAL HOLDER

SANITIZER DISPENSER  
NOT INCLUDED

OPEN FOR TISSUE PAPER BOX

ZZ94746 WALL-MOUNTED



APPROVED QUOTE SHEET (VALID FOR 90 DAYS)

PO# / Project:

Tag:

Client: IOF BUSINESS FURNITURE

Date: 05/01/2020

F

CAD File: IOF(05012020\_2)

Page: 4 of 6



Drawing is complete. Please proceed and see the attached purchase order.

Signature \_\_\_\_\_ Date \_\_\_\_\_



Changes required. See my notes and provide me with an updated drawing and quotation.

